

C I V I L H O S P I T A L R O A D



PROP. CONST. FOR SUYASH CONSTRUCTIONS AT GARPEER CHOWK SANGLI.



SECOND FLOOR PLAN



C I V I L H O S P I T A L R O A D

I N T E R N A L C O L O N Y R O A D

THIRD FLOOR PLAN



LIFT
4'11" X
4'11"

SHOP 1
13'4" X 8'0"

SHOP 2
13'3" X 8'11"

SHOP 3
13'3" X 10'0"

SHOP 7
8'11" X 11'2"

SHOP 6
10'0" X 11'2"

SHOP 5
14'5" X 11'2"

SHOP 4
13'3" X 11'2"

INTERNAL COLONY ROAD

CIVIL HOSPITAL ROAD

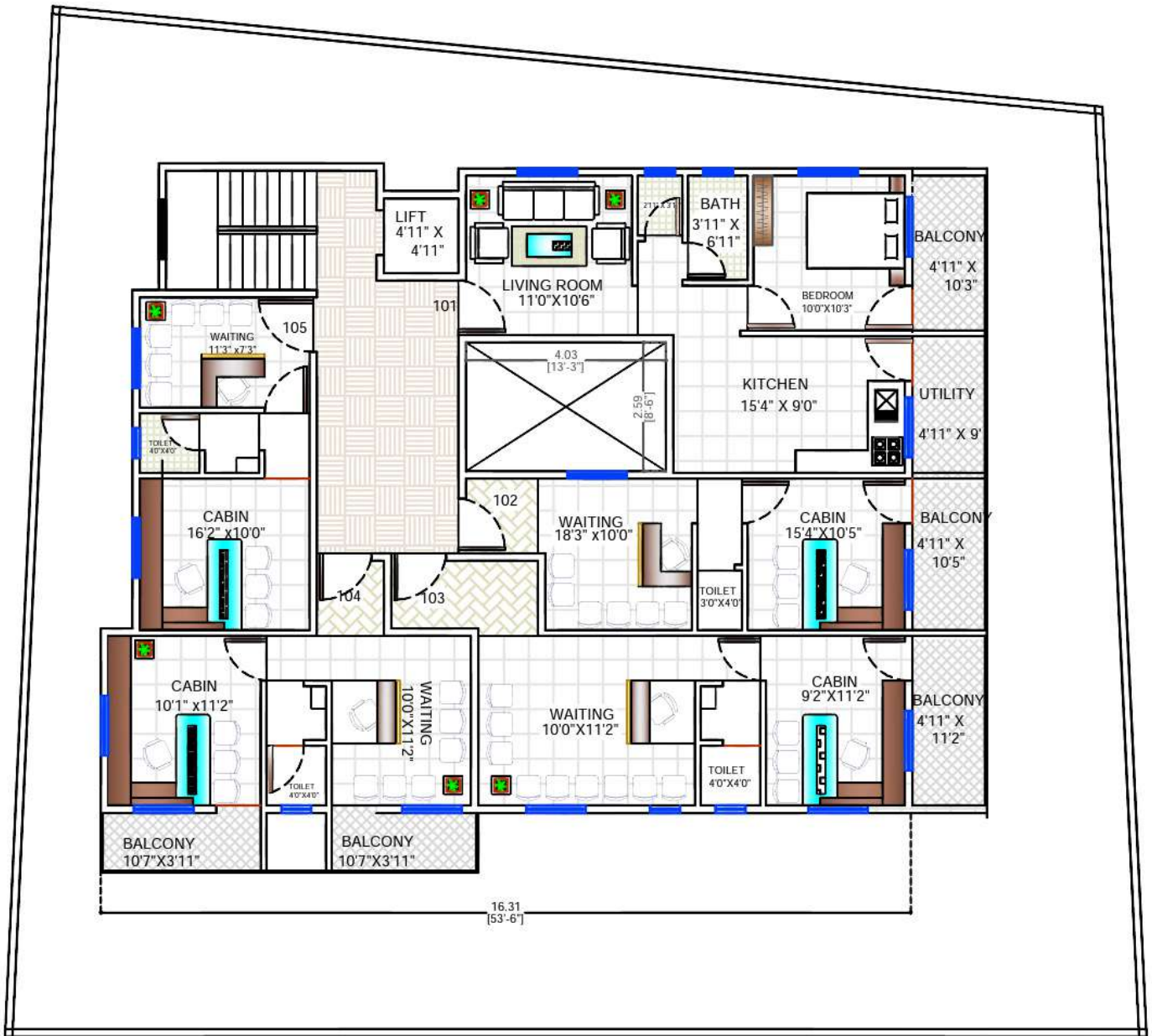
LOWER GROUND FLOOR PLAN



INTERNAL COLONY ROAD

CIVIL HOSPITAL ROAD

UPPER GROUND FLOOR PLAN



FIRST FLOOR PLAN